



KNITCO FASHIONNS

KNITTED GARMENTS MANUFACTURING COMPANY
SMALL & MEDIUM SCALE EXPORTERS

| ABOUT US

KNITCO

- Knitco was started in the year 2007 by sarvan alias saravanan our CEO, an aspiring entrepreneur and he has about 25 years of experience in knitted garments manufacturing and export, he has a bachelor's degree in business management from the PSG college of arts & science
- We are manufacturers, suppliers and exporters of apparels and garments based in tirupur/india .
- Our products are knitted apparels
- We are specialized in women's wear

FUNCTIONAL SPECIFICS

KNITCO

Our factory is a 300 machines “40,000 sq.ft” factory well equipped completely with “imported” machineries and an exclusive “10 machines” sampling department.

- We are a “SA 8000 : 2014” COMPLIANT & CERTIFIED FACTORY.
- We are a “SEDEX APPROVED – SMETA AUDITED” FACTORY.
- We have a factory strength of 400 workers
- We have around 10 Managers, 20 Supervisors and 70 Staff personnel.



OUR PRODUCT RANGE

KNITCO

OUR SPECIALIZATION: WOMEN'S WEAR

T-SHIRTS , TOPS , KNIT BLOUSES, KNIT SKIRTS, LEGGINGS, KNIT - CASUAL PANTS & SHORTS / PEDAL PUSHERS, KNIT DRESS, KNIT BEACHWEAR.

KNIT BLAZERS/JACKETS, POLO'S , HOODIES & SWEATSHIRTS, SHRUGS/BOLEROS, KNIT CARDIGANS AND VARIOUS OTHER STYLES OF "KNIT GARMENTS" .

WE DO NOT HANDLE: "NIGHTWEAR" & "LINGERIE" – FOR WOMEN.

WE DO NOT HANDLE: "MEN" + "BOYS" + "GIRLS" & "BABIES".

FABRICS & IT'S COMPOSITION

KNITCO

JERSEY, RIB, INTERLOCK, PIQUE, FRENCH TERRY (LOOPKNIT / FLEECE) ; DROP NEEDLE, STRIPES ETC., = SOLID DYED + YARN DYED + COLOUR MELANGES + NEPPY MELANGES + SLUBBED & SO ON.

100% COTTON, 100% VISCOSE, 100% POLYESTER, ALL FIBRES WITH “ ELASTANE ” , COTTON/POLYESTER, COTTON/VISCOSE, POLYESTER/VISCOSE & SO ON.

FABRIC FINISH RANGE:

SOLID DYED, YARN DYED, BRUSHED, ALL OVER PRINTING, “CRUSHED” EFFECT & ALL TYPES OF GARMENT WASHING, TIE ‘N’ DYE “OPTIC” THRU A.O.P, BURN- OUT etc.,



SPECIAL WORK

SPECIAL WORK

KNITCO

- HAND WORK = “ SMALL SIZE ” OF BEADS + CHROCHET WORK + HAND EMBROIDERY + SEQUINS
- CRYSTAL STONES – DIAMANTE – STUD MOTIFS ETC.,
- ALL TYPES OF MACHINE SEQUINS – IN EMB SEQUINS MACHINE
- LACE – IMPORTED FROM CHINA
- ALL-OVER “SCHIFFILI (HAKOBA)” EMBROIDERY WOVEN = AS AN EMBELISHMENT
- HEAT PLEATED GARMENTS

CROCHET LACE



SMOCK STITCH / SCHIFFILI (hakoba) EMBO



STONES/DIAMANTE/STUDS



OTHER STYLES



OTHER STYLES



OTHER STYLES



PRODUCTION CAPACITY & MINIMUM ORDER REQUIREMENT

TOTAL "MONTHLY" PRODUCTION CAPACITY :

- IN-HOUSE: 100,000 PCS OF LADIES POLO T.SHIRT {OR} ITS EQUIVALENT
- MINIMUM ORDER REQUIREMENT :
- MINIMUM PER STYLE & COLOUR : 2000 PCS
- AVERAGE DELIVERY LEAD TIME : 75 - 90 DAYS
- Repeat Orders {URGENT} DELIVERY LEAD TIME : 60-75 Days

IN HOUSE - FACILITY

KNITCO

EMBROIDERY UNIT:

- WE HAVE TWO “20 HEADS WITH 9 COLOURS” – JAPANESE COMPUTERISED EMBROIDERY MACHINES .
- PRODUCTION CAPACITY : 4000 GARMENTS PER DAY.



IN HOUSE - FACILITY

KNITCO

PLACEMENT PRINTING UNIT :

4 MACHINES - PLACEMENT PRINTING : UPTO
12 COLOURS.

CAPACITY : 10000 GARMENTS PER DAY.

POSSIBLE PRINTING:

- WATER BASED PIGMENT PRINT
- HIGH DENSITY PRINT / * FOAM PRINT
- FLOCK PRINT / * GLITTER PRINT
- FOIL PRINT / * NON-PVC PRINT



OUTSOURCED JOBS

KNITCO

FABRIC FINISHING PLANT – {“tie-up” Facility}:

1 USA-MADE + 1 “ FERRARO , ITALY ” = 2 TUBULAR FABRIC” COMPACTING MACHINES AND 1 “ TUBE-TEX , USA” OPEN WIDTH COMPACTING MACHINE - FOR ENSURING FABRIC SHRINKAGE AND STABILITY. APART FROM THESE 3 MACHINES, THIS UNIT HAS 1 “FABRIC RAISING” MACHINE – “ I – KUANG , TAIWAN “.

OUTSOURCED JOBS

KNITCO

DYEING UNIT – “{tie-up” Facility} :-

- BOTH ATMOSPHERIC & HTHP “IMPORTED/EUROPEAN” SOFT FLOW DYEING MACHINES
- WELL EQUIPPED WITH SQUEEZER AND DRYER.

GARMENT WASHING PLANT – “{tie-up” Facility} :-

TOTAL CAPACITY : 5,000 GARMENTS PER DAY

GARMENT “CRUSHED” PROCESS // “HEAT PLEATING” PLANT – “{tie-up” Facility} :-

TOTAL OUTPUT : 5,000 GARMENTS PER DAY

OUTSOURCED JOBS

KNITCO

OTHER PRINTS {"tie-up" - facility}:

- PHOTO TRANSFER PRINT
- PLACEMENT DISCHARGE PRINT
- DIGITAL SUBLIMATION PRINT – PLACEMENT & ALL-OVER
- FOR ALL-OVER PRINTING, WE USE THE SERVICES OF OUR SUB-CONTRACTING “ROTARY PRINTING” UNIT LOCATED 2 KM FROM OUR FACTORY.

FABRIC FINISHING PLANT {"tie-up" Facility}:

1 USA-MADE + 1 “ FERRARO , ITALY ” = 2 TUBULAR FABRIC” COMPACTING MACHINES AND 1 “ TUBE-TEX , USA” OPEN WIDTH COMPACTING MACHINE - FOR ENSURING FABRIC SHRINKAGE AND STABILITY. APART FROM THESE 3 MACHINES, THIS UNIT HAS 1 “FABRIC RAISING” MACHINE – “ I – KUANG , TAIWAN

WORK CYCLE

KNITCO

STEP 1 : Upon receipt of the “stylesheet” from the client/buyer – the “development” samples are made and dispatched to them [duration 2 to 3 weeks time].

STEP 2 : upon receipt of client feedback and comments, it is incorporated in the next set of samples and sent as pre production samples and once the styles ,designs and colors are frozen [duration 2-3 weeks].

STEP 3 : Upon receipt of the work ordersheet the actual production begins and will complete within six weeks from the receipts of the order.

STEP 4: Upon the completion of quality checks by the client, the goods will be dispatched through the client’s approved shipping agent.

QUALITY CONTROL CYCLE


STEP 1: At the fabric stage: after thorough quality checks – it is sent for cutting.

STEP 2: IN-LINE STAGE: During each and every stage of production process such as at Cutting Floor > Stitching Floor > Trimming & Checking floor > Ironing & Packing Floor.

STEP 3: FINAL RANDOM STAGE: After the whole consignment is carton packed and ready shipment, it is subjected to final random inspection by the Q.C. Manager and his team for right from Fabric Properties > Styling Details > Measurement & Fit Detailings > Accessories & Packing Instructions. finally after passing the Final Random Inspection, the goods are allowed for transportation to oagn – IC in tirupur for “Final Inspection”. Failed goods are re-sent to the production floor for necessary correction and re-making.

ENVIRONMENTAL SAFETY STANDARDS & OUR POLICIES

- the processed water of the dyeing, garment washing & printing factories are treated in the effluent treatment plant as per government's environmental safety standards.
- Employment Practices: no child labour + no forced labour + very safe work station is 100% ensured and all governmental rules & regulations regarding the labour welfare is followed in letter & spirit.
- Intellectual Property : we strictly respect and protect the trade secrets, patents, trade marks and copy righted works of our customers / buyers.

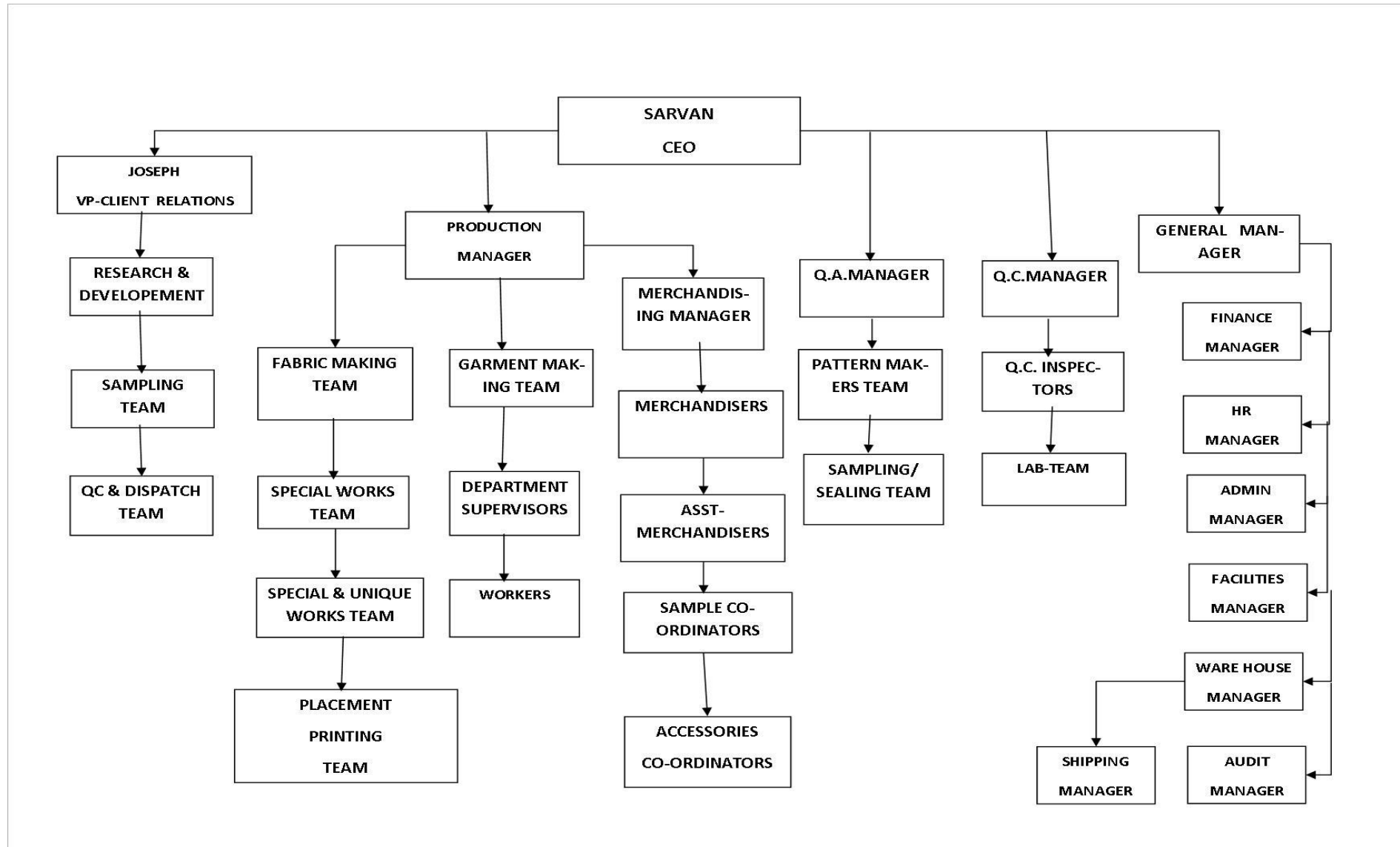


SUSTAINABLE PRODUCTS

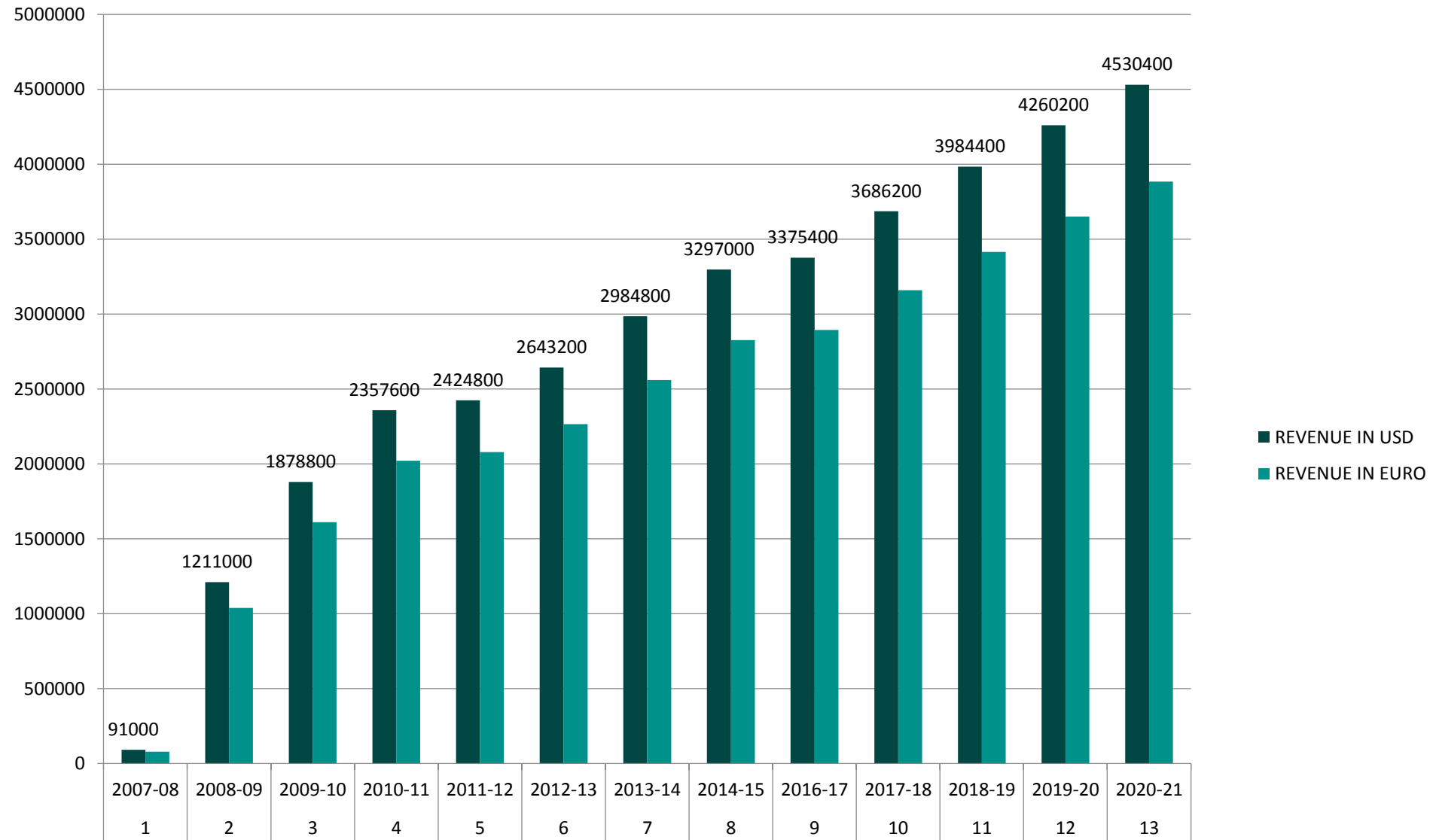


*KEEPING GLOBAL WARMING AND CLIMATE
CHANGE IN MIND WE HAVE ALSO MANUFACTURE
GARMENTS FROM - “RECYCLED YARN”*

ORGANIZATION CHART



FINANCIALS



THE CLIENT LIST

KNITCO

- OTTO GROUP: Bonprix –Germany, Venus – USA, SIEH AN!-Germany
- LPP S.A., Poland
- SMYK , Poland
- The Juice Corporation, UK
- Peacock Stores,UK
- Primark Stores,UK
- Heatons, Ireland
- Dunnes Stores,Ireland
- TOG 24,UK
- El Corte Ingles,Spain
- Amichi , Spain



OUR BANK

KNITCO



CSB BANK

PHYSICAL ADDRESS:

**COURT STREET, OFF KUMARAN ROAD,
TIRUPUR –641 601, INDIA.**

ACCOUNT NO: 209-02663157-195001

SWIFT CODE: CSYBIN5



LOCATION & CONTACT

ADDRESS:

KNITCO FASHIONNS
10/192, LUCKY GARDEN,
KUNNANGALPALAYAM (GANAPATHIPALAYAM ROAD),
PALLADAM ROAD, VEERAPANDI (P.O),
TIRUPUR – 641605, INDIA

JOSEPH SAMUEL - MBA (UNIVERSITY OF WALES/UK)
VICE PRESIDENT - CLIENT RELATIONS

PHONE: +91 950 056 5555

What's App: +91 729 909 9959

E-MAIL : joseph@knitco.com



THANK YOU!
